
TAME Runner Drivers

B

For web testing, TAME Runner uses Selenium Web Drivers to run tests in different web browsers.

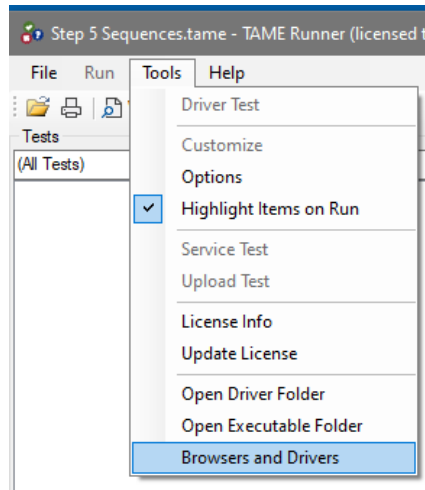
When TAME Runner is installed or updated the most current versions (current as of the production date of the TAME Runner version) are installed automatically for use. At present these browsers' drivers are automatically installed:

- Google Chrome
- Mozilla Firefox (a.k.a. the Gecko driver)
- Microsoft Internet Explorer
- Microsoft Edge

If you are satisfied with only these browsers and keeping with the most current versions of the browsers and drivers, you can safely ignore this Appendix. But if you need to use other browsers (e.g. Opera), earlier versions of browsers, or external web drivers, read on!

What browsers and drivers do I have?

To see what browsers and drivers are currently installed, select Tools > Browsers and Drivers:



This brings up a list of installed browsers and enabled Selenium Web Drivers:

Browser	Version	Driver	Version
Firefox (64)	77.0.1	geckodriver.exe	0.26.0
Google Chrome (64) (DEFAULT)	83.0.4103.106	chromedriver.exe	83.0.4103.39
Internet Explorer (64)	11.00.18362.1	IEDriverServer.exe	3.150.1.0
Microsoft Edge (64)	83.0.478.54	msedgedriver.exe	83.0.478.37
Pale Moon (64)	28.5.0		
Opera Internet Browser (64)	68.0.3618.165	operadriver.exe	
Edge (Legacy) (64)	11.00.18362.815	@builtin	11.00.18362.815

Default Browser:

If a browser is listed, that browser is installed on your machine. The Version lists the browser version. Mouse over the browser name to see the location of the browser's executable.

The Driver and Version columns list corresponding installed drivers and driver versions.

Note that Selenium WebDrivers are available for most, but not all Windows browsers. For example, Pale Moon is a browser that's based on the old pre-Chromium Firefox. At present, there is no Selenium WebDriver for PaleMoon.

If a driver name is present but no version is specified, a driver is available, but no driver is installed. In the example above, Opera has no driver installed.

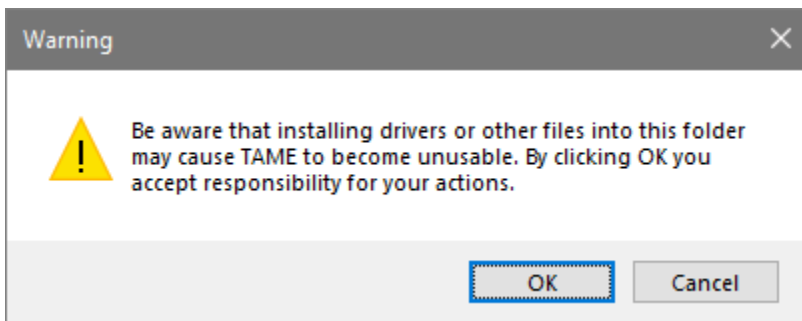
Default browser selection

The Default Browser drop-down lets you choose one browser to be selected automatically when the tests are loaded and when running tests via the command line.

Default Drivers

The default browser drivers are located in the same directory as the Runner executable. You can see these by selecting Tools > Open Executable Folder.

When you open the executable folder (or the Driver folder below) you will need to acknowledge the warning:



In this folder you will find

- chromedriver.exe
- geckodriver.exe
- IEDriverServer.exe
- IEDriverServer64.exe
- msedgedriver.exe

Adding Drivers (e.g. the Opera driver)

You can download other drivers from the web—either to support additional browsers (e.g. Opera) or to use drivers for older browser versions. (If you are a bleeding-edge browser tester you

may also want to use pre-release versions of newer browser versions.)

- Browsers

Firefox

GeckoDriver is implemented and supported by Mozilla, refer to their [documentation](#) for supported versions.

Internet Explorer

Only version 11 is supported, and it requires additional [configuration](#).

Safari

SafariDriver is supported directly by Apple, for more information, check their [documentation](#)

Opera

OperaDriver is supported by Opera Software, refer to their [documentation](#) for supported versions.

Chrome

ChromeDriver is supported by the Chromium project, please refer to their [documentation](#) for any compatibility information

Edge

Microsoft is implementing and maintaining the Microsoft Edge WebDriver, please refer to their [documentation](#) for any compatibility information

Begin your search for drivers at
<https://www.selenium.dev/downloads/>

For example, the Opera driver can be found at
<https://github.com/operasoftware/operachromiumdriver/releases>







Download the zip file (for TAME, generally the win64 version).

81.0.4044.113

 rkrupski released this on Apr 22

OperaDriver binaries for [Opera Stable 68](#)

▼ Assets 6

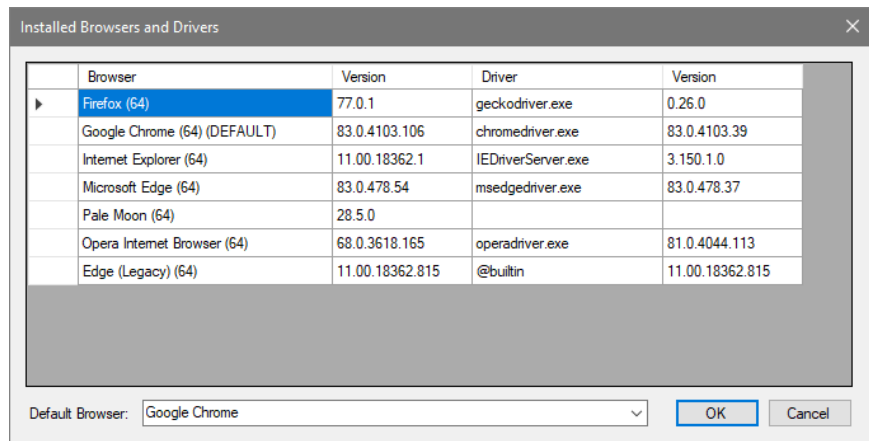
 operadriver_linux64.zip	5.23 MB
 operadriver_mac64.zip	6.9 MB
 operadriver_win32.zip	4.27 MB
 operadriver_win64.zip	4.44 MB
 Source code (zip)	
 Source code (tar.gz)	

Unzip the file to get the driver executable
operadriver.exe.

To install the driver, copy it into the drivers folder. Select
Tools > Open Driver Folder

Copy the driver executable into the driver folder.

Close TAME Runner and restart. Open Browsers and Drivers
and see the Opera driver is now installed.



	Browser	Version	Driver	Version
▶	Firefox (64)	77.0.1	geckodriver.exe	0.26.0
	Google Chrome (64) (DEFAULT)	83.0.4103.106	chromedriver.exe	83.0.4103.39
	Internet Explorer (64)	11.00.18362.1	IEDriverServer.exe	3.150.1.0
	Microsoft Edge (64)	83.0.478.54	msedgedriver.exe	83.0.478.37
	Pale Moon (64)	28.5.0		
	Opera Internet Browser (64)	68.0.3618.165	operadriver.exe	81.0.4044.113
	Edge (Legacy) (64)	11.00.18362.815	@builtin	11.00.18362.815

Default Browser:

Driver Search Order

If you need to use a different version of a driver installed by default (e.g. the chromedriver), install it into the driver folder.

Future Features

Future versions of TAME in progress will support remote web drivers.

